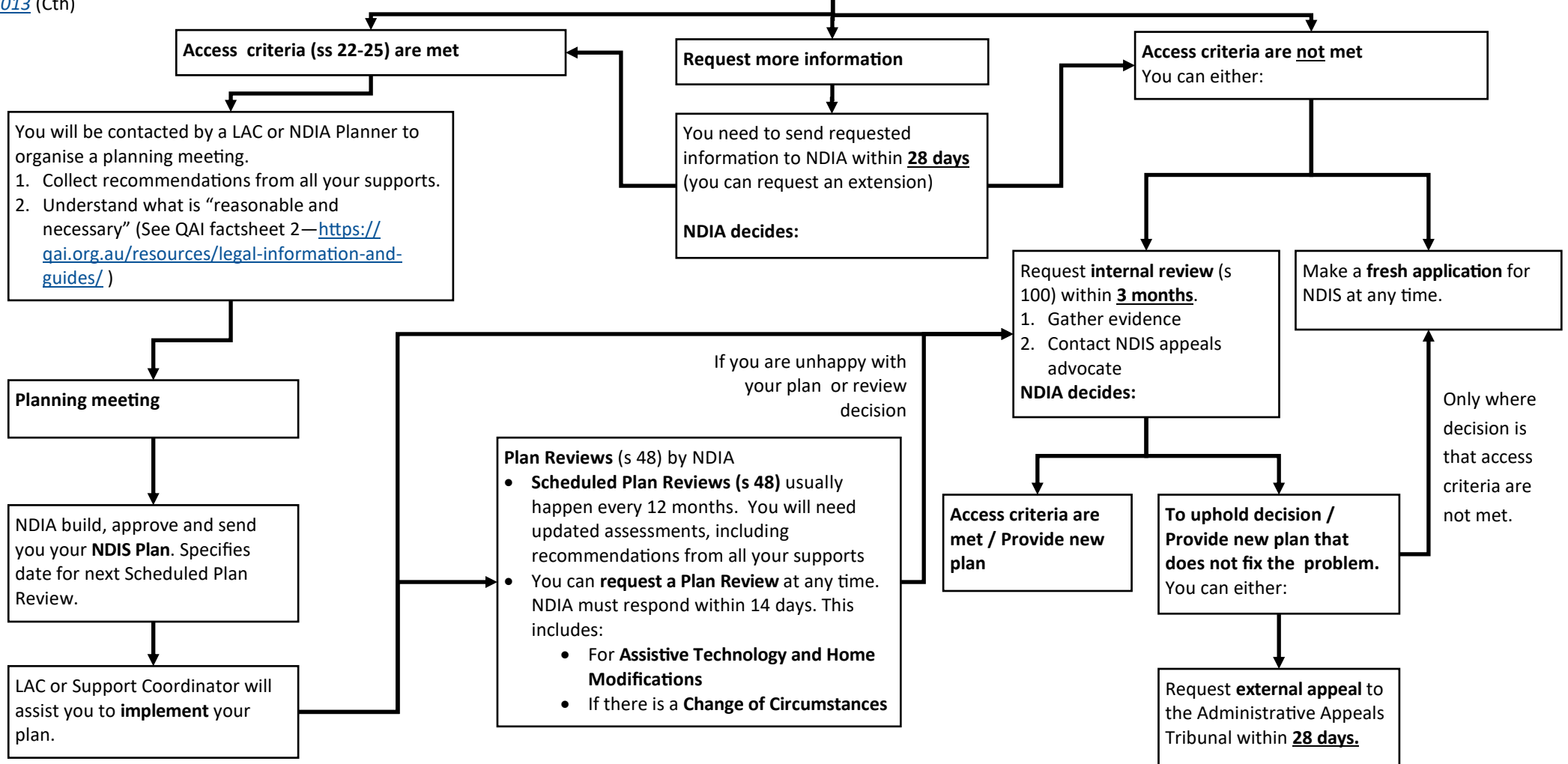


Accessing the National Disability Insurance Scheme (NDIS)

Unless otherwise specified, references to sections are in the [National Disability Insurance Scheme Act 2013](#) (Cth)

Request access to the NDIS—
 1. Call NDIA on 1800 800 110 or your Local Area Coordinator (LAC)
 2. Submit the Access Request Form (ARF) or Supporting Evidence Form with all supporting evidence to prove disability under s 24.
NDIA decides:

For more information on the process or gathering evidence see: <https://qai.org.au/resources/legal-information-and-guides/>



This publication is for general information only. It must not be relied on as legal advice. You must seek legal advice about your own particular circumstances.
 Last updated: 02/09/19



Queensland Advocacy Incorporated, Level 2, 43 Peel Street, South Brisbane QLD 4101 |
 T (07) 3844 4200 | F (07) 3844 4220 | E qai@qai.org.au

QAI's mission is to promote, protect and defend, through advocacy, the fundamental needs and rights and lives of the most vulnerable people with disability in Queensland.